



Lima Court

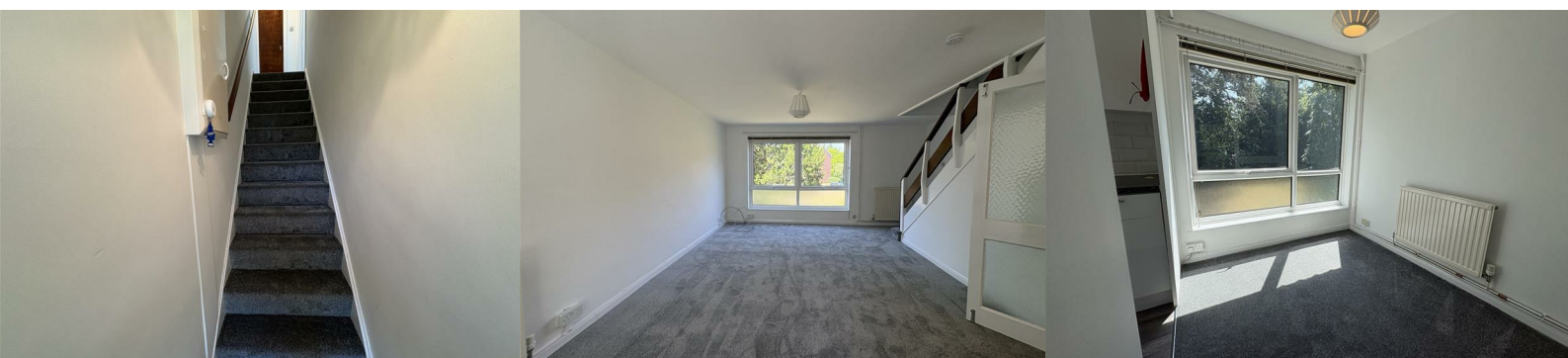
Reading, RG1 6NG

£1,250 PCM



Exceptional first floor maisonette presented to a very high standard. The property has undergone a brand new decor and carpets throughout, making it clean, light and airy. The property offers larger than average accommodation split over 2 floors, being the first and the second. On entry there is a staircase to the main living accommodation which leads to a very spacious lounge. Separate dining area and brand new fitted kitchen with appliances. To the second floor level are two double bedrooms, both with built-in storage cupboards, and a main bathroom with electric shower over bath. Further benefits include gas central heating and double glazed windows and doors. The property is available unfurnished. Private garage in a block for tenants use. Private residents parking. Council tax band C. Early viewings recommended.

* for more info please see www.vanderpump.co.uk - Our application fees start from £258.00 including vat, and Reference fees from £78.00 including vat, a Deposit protection fee of £48.00 including vat also applies per property

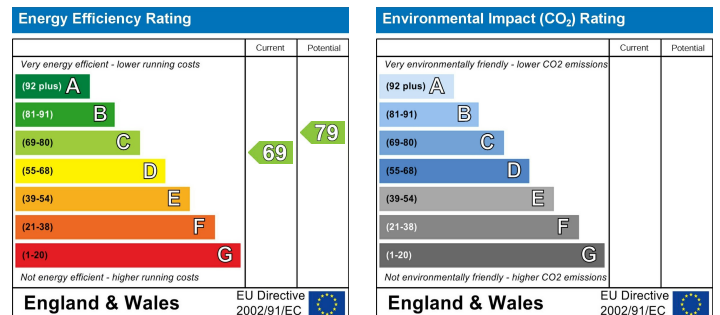




Area Map



Energy Efficiency Graph



These particulars, whilst believed to be accurate are set out as a general outline only for guidance and do not constitute any part of an offer or contract. Intending purchasers should not rely on them as statements of representation of fact, but must satisfy themselves by inspection or otherwise as to their accuracy. No person in this firm's employment has the authority to make or give any representation or warranty in respect of the property.